

Specification Sheet



1 cm Reinforced Slabs:
Ultra-thin is the new strong

Technical Specifications



- Lightweight
Only 6 lbs/sq ft on average



- Superior flexural strength



- 10x stronger than unbacked stone



- 100% natural stone direct from our North American quarries



- Easy to cut, fabricate and install



- Significantly preserves blade

Applications

Kitchen Countertops
Full Backsplashes

Bathroom Vanities
Large Format Flooring

Shower Walls
Interior Cladding

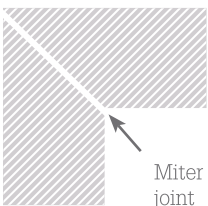
Exterior Cladding
Engineering support
available for other applications

Overhang

Up to 2" of unsupported overhang. Anything beyond this will require brackets, corbels or other engineered support to be installed.

Edge Options

Mitered



Miter joint

Eased



1/2 Bullnose



Pencil



1/4 Round



Bevel



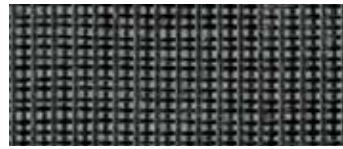
POLYCOR

Format



Up to 9' x 5' x 3/8"

Composite Backing



Finishes Available

- Polished
- Honed
- Antique
- Sawn
- Smooth

Material Choices

Now available in all of Polycor's granites & marbles



Caledonia



Cambrian Black



Kodiak Brown



Laurentian Green



Nordic Black



Saint Henry Black



Titanium Pearl



Picasso



Solar Grey



Pearl Grey



White Cherokee



White Georgia

Handling Note

To ensure maximum strength, always carry the slab with the composite facing down.

